



40.000 KN - Down Stroke Swaging Machine

This swaging machine with its 40.000 KN pressing capacity is capable of pressing ferrules up to:

- XL 90 - Z 94, Z 102 in Multi-bite
- Flemish Eye 152 (6")

Our 4000t Down Stroke Press sets itself apart thanks to its very good accessibility and the piston located on top. This means that the workpiece remains in position during swaging and is particularly simple to finish.



Optional Rigging Arm.



Hydraulic Press 40.000 KN

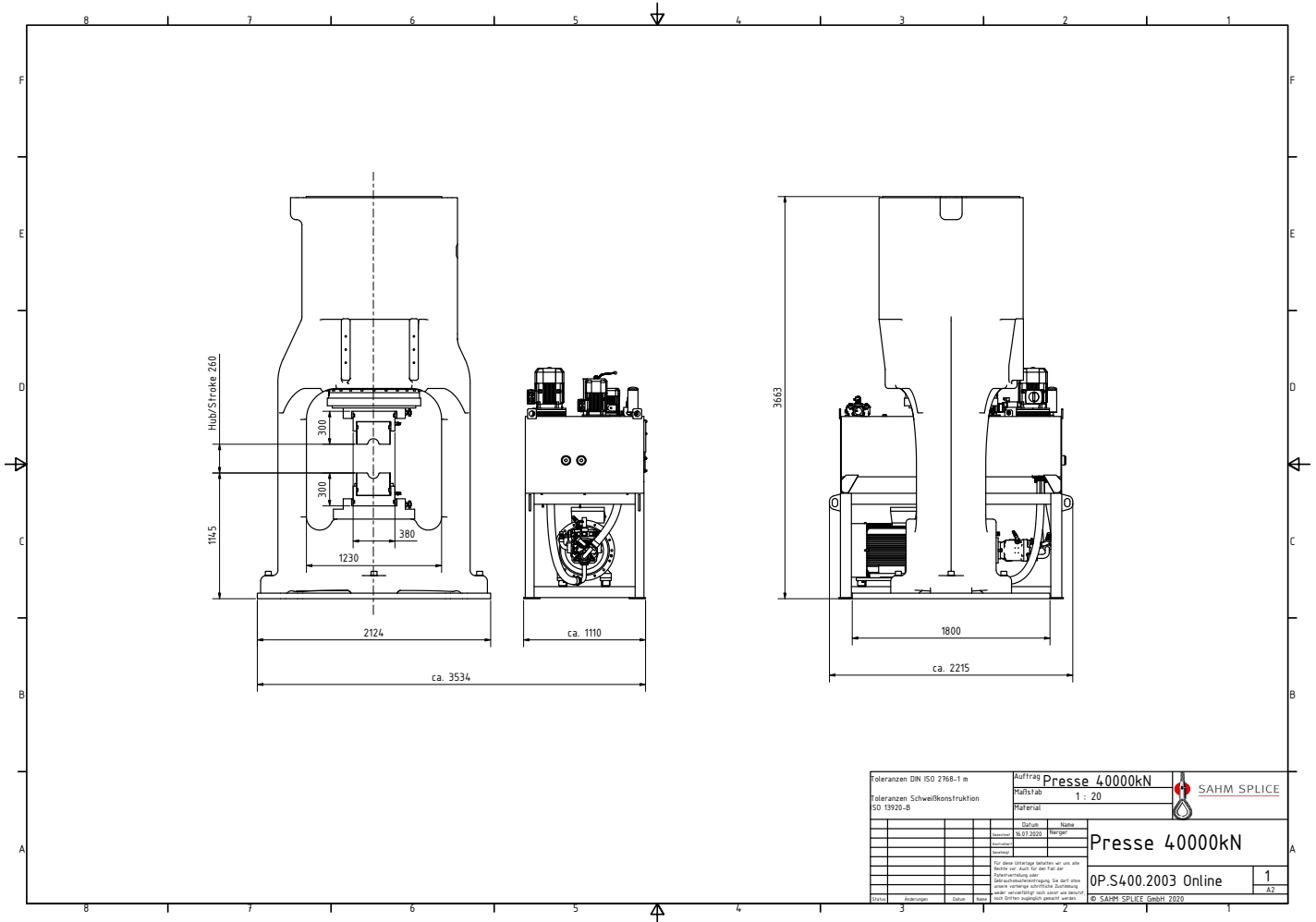
Technical Data

Max. pressure capacity	40.000 KN
Max. piston stroke	260 mm
Max. oil pressure	525 bar
Dimensions (L x W x H)	3.534 x 2.215 x 3.663 mm
Weight	32.000 kg
Oil capacity	800 L
Max. swaging dies (W x H)	380 x 300 mm
With angle packing (W x H)	300 x 250 mm / 250 x 200 mm
Unloaded stroke speed (up to 3.140 kN)	6,3 mm/s
Loaded stroke speed	3,4 - 1,26 mm/s
Reversing speed	7,7 mm/s
Operating height	1.135 mm
Stroke limit	smooth, electronic control
Automatic control	✓
Foot switch	✓
Power supply	55 KW / 400 V / 50 Hz

Other voltages on request!
We reserve the right to change technical data!



40.000 KN - Down Stroke Swaging Machine



Toleranzen DIN ISO 2768-1 m		Auftrag Presse 40000kN		SAHM SPLICE
Toleranzen Schweißkonstruktion ISO 13920-B		Maßstab 1 : 20		
Material		Datum		Presse 40000kN OP.S400.2003 Online
Für diese Zeichnung sind nur die Maße der Zeichnung für den Fall der Ausführung zu berücksichtigen. Alle anderen Maße sind im Maßstab der Zeichnung anzunehmen.		Name 20.03.2020 Menge		
1 2 3 4 5 6 7 8		1 2 3 4 5 6 7 8		1 A2 © SAHM SPLICE GmbH 2020